

# ONLINE CONFERENCE

4 days of learning

## Preventing domestic homicide: From research and lived experiences to practice

Focus on Indigenous; Immigrant and Refugee;  
Rural, Remote and Northern Populations; and Children

May 11 – 14, 2021  
1:00 – 5:00 p.m. EDT

Canadian Domestic Homicide  
Prevention Initiative



### Day 01

**Tuesday, May 11**

Making sense of  
domestic homicide data

### Day 02

**Wednesday, May 12**

Learning from front-line  
service providers

### Day 03

**Thursday, May 13**

Listening to the voices of  
survivors and victims

### Day 04

**Friday, May 14**

Translating knowledge into  
practice

An online conference focusing on the learnings from the **Canadian Domestic Homicide Prevention Initiative with Vulnerable Populations** - a research project funded by the Social Sciences and Humanities Research Council of Canada.

This conference features lessons learned from a 6-year national research project on domestic homicides with a focus on Indigenous; Immigrant and refugee; Rural, remote and northern populations; and Children exposed to domestic violence.

**Trigger Warning:** The conference deals with domestic violence and domestic homicide. You may hear about information dealing with adults and children killed in the context of domestic violence and listen to the voices of survivors or surviving family members who lost someone close to them. This information and these stories may trigger memories of past traumas. Please be advised of this concern in advance of registering and participating in the conference.

For your well-being, we suggest that you have friends, family, or counsellors available to you if you are concerned about being triggered by the conference proceedings. Indigenous elders have suggested that it is recommended that you keep some healing medicines with you for comfort and support during the conference such as fresh water, a candle, blanket, or shawl. The conference provides a wellness session online if you wish to debrief in an online group setting – we will have wellness sessions hosted by Indigenous, Francophone and Anglophone counsellors.



# MESSAGE FROM DIRECTORS

We are pleased to welcome you to our 2021 Domestic Homicide Prevention On-Line Conference.

The conference represents the culmination of a 6-year Social Sciences and Humanities Research Council (SSHRC) research grant focused on domestic homicide prevention: The Canadian Domestic Homicide Prevention Initiative with Vulnerable Populations (CDHPIVP). The grant involved researchers from 12 universities across Canada and over 60 community organizations as well as dozens of graduate and undergraduate students in sociology, psychology, education, social work, criminology, and law.

The conference is organized over 4 days to highlight different phases of our research – (1) developing a national database on domestic homicides; (2) understanding the barriers and promising practices from front-line professionals involved in risk assessment and safety planning; (3) and learning from the voices of survivors on missed opportunities to prevent homicides. Our final day features the work done by Domestic Violence Death Review Committees across multiple provinces and concluding commentary from conference learnings. For each of the first three days, we will have breakout rooms to allow for more engagement and exchanges with the conference speakers.

The conference also brings together survivors, researchers, policy makers, and professionals working in diverse sectors while providing services to victims, perpetrators, and children. The themes of the conference are the importance of learning from the voices of survivors and family members as well as recognizing vulnerable populations who are at risk of homicide. Throughout the conference, we will highlight the specific experiences and plight of Indigenous, immigrant/refugee and rural/remote/northern victims of domestic violence as well as the risks of homicide for children.

We are learning more about the importance of training and collaboration across disciplines and service systems. Our vision for our conference is to share information across Canada and break down the silos that exist among justice and other formal and community-based systems and community agencies. These silos undermine effective risk assessment, safety planning and risk management in domestic violence cases.

We want to thank our dedicated staff, students, volunteers and partners who have worked hard behind the scenes to help organize and promote our conference. Throughout the conference we will be seeking the input of all participants on the barriers and challenges in reducing domestic violence and domestic homicides in Canada. We look forward to sharing and receiving knowledge. As part of our partnership grant, knowledge mobilization is our mission, so we will be recording the conference and sharing the presentations, PowerPoints, and insights from participants on our website. We hope you find these four days supportive in enhancing your personal and collective efforts to prevent domestic homicides.

## **Myrna Dawson**

CDHPIVP Co-Director  
Professor of Sociology and Research Leadership Chair  
Director, Centre for the Study of Social and Legal Responses to Violence  
University of Guelph

## **Peter Jaffe**

CDHPIVP Co-Director  
Professor, Faculty of Education  
Academic Director, Centre for Research and Education on Violence Against Women & Children  
Western University

# CANADIAN DOMESTIC HOMICIDE PREVENTION INITIATIVE WITH VULNERABLE POPULATIONS

The Canadian Domestic Homicide Prevention Initiative with Vulnerable Populations (CDHPiVP) funded by the Social Sciences and Humanities Research Council (SSHRC) is a research partnership project that conducted research on domestic homicides, risk assessment, risk management and safety planning among vulnerable populations in Canada.

The CDHPiVP focused on four populations that experience increased vulnerability to domestic homicide:

- Indigenous populations- the rate of domestic homicide is eight times higher for Indigenous women compared to non-Indigenous women in Canada. The impact of cultural barriers, structural and historical trauma also plays a significant role.
- Rural, remote and northern populations- the rate of domestic homicide in rural Canada is significantly higher than in urban areas. Contributing factors include limited access to services, and role of guns.
- Immigrant and refugee populations- experiences with language, cultural and other barriers may make it more difficult to report domestic violence and to access services.
- Children exposed to domestic violence- child abuse, separation, custody and access issues have been identified as risk factors for domestic homicide.

## RESEARCH CONDUCTED

1. **National database on domestic homicide** – to serve as a central repository for data on domestic homicide cases and the identification of associated risk factors. One database holds information on domestic homicides from 2010- 2020 based on court and media records.
2. **Comprehensive literature review** examining risk assessment, risk management, and safety planning strategies that currently exist for domestic violence and homicide, in general, and for the identified populations specifically.
3. **Research with stakeholders** – A Key Informants Survey was conducted from January to April 2017. Subsequently, interviews were conducted with 360 service providers working in shelters, child protection, mental health, and justice regarding domestic violence and homicide risk assessment, risk management and safety planning practices.
4. **Listening to survivor voices** – interviews were conducted with more than 80 domestic violence survivors and nearly 40 loved ones of homicide victims to identify risk factors, strategies for managing risk, help-seeking strategies, and outcomes.

## KNOWLEDGE MOBILIZATION

A number of knowledge mobilization products and activities have resulted from this project including:

- reports and infographics based on the domestic homicide database
- series of 10 homicide briefs
- annotated bibliographies
- journal articles
- conference presentations
- student meetings
- partnership meetings
- student theses and dissertations

## PARTNERSHIPS & COLLABORATION

This research was made possible through strong local, provincial, and national partnerships including 35 organizations, more than 50 collaborators, 12 co-investigators and 50 research assistants. The names of our partners, collaborators and team are available in the program.

To learn more about the project [visit www.cdhipi.ca](http://www.cdhipi.ca).

This research was supported by the Social Sciences and Humanities Research Council of Canada



Social Sciences and Humanities  
Research Council of Canada

Conseil de recherches en  
sciences humaines du Canada

Canada

# DAY 01

Tuesday, May 11

---

Making sense of  
domestic homicide data:  
Definitions and data

**TUESDAY, MAY 11, 2021****Making sense of domestic homicide data: Definitions and data**

Definitions of domestic homicide and the subsequent data collected shape our understandings of these deaths as well as policy and prevention efforts. The data collected depends on the thoroughness and cooperation of investigating police officers and coroners or medical examiners. In some cases, the only source of information is media reports and court judgments. This workshop will first explore issues that arise when defining domestic homicide in the context of our work with the Canadian Domestic Homicide Prevention Initiative with Vulnerable Populations (CDHPVP) and how these considerations vary across the vulnerable populations examined. Second, we will discuss selected case studies to demonstrate what cases were included and excluded in our work, further illustrating various case characteristics that posed challenges for making such determinations. Third, we will provide a brief overview of trends and patterns in domestic homicide in Canada in general and across the four populations emphasizing the practical challenges and realities of collecting such data and for coordinating data collection efforts across the country. Finally, a moderated expert panel discussion will focus on key issues related to definitions and data for the four populations.

1:00 – 1:25	Welcome, Orientation, Opening Ceremony – Peter Jaffe, Myrna Dawson, Myrna Kicknosway
1:25 – 1:45	Setting the stage for conference- Peter Jaffe and Myrna Dawson
1:45 – 2:25	Domestic homicide- Definitions and database – Myrna Dawson, Jordan Fairbairn and Danielle Sutton
2:25 – 2:40	Break
2:40 – 3:45	Moderated panel discussion- Moderator: Myrna Dawson. Panel: Wendy Verhoek-Oftedahl, Claudette Dumont-Smith, Crystal Giesbrecht, Anuradha Dugal
3:45 – 4:00	Closing thoughts – Elders Dan and Mary Lou Smoke, Myrna Dawson, Peter Jaffe
4:00 – 5:00	Breakout discussions – join a “Session” to ask questions of speakers and panelists Wellness rooms remain available for those who need to de-brief

# DAY 02

Wednesday, May 12

---

Learning from front-line  
service providers



**WEDNESDAY, MAY 12, 2021****Barriers and Promising Practices in risk assessment, safety planning and risk management: Learning from front-line service providers**

Front-line professionals across multiple sectors play a critical role in responding to domestic violence disclosures. Their responses may involve risk assessment and safety planning for victims and risk management strategies with perpetrators. This workshop will outline some of the challenges and accomplishments in our research in completing a national survey of service providers and then in-depth interviews with key informants. Highlights of the major themes from this research will be presented including the results of the survey of 1,405 professional and 366 Key informant interviews. The themes include identifying appropriate risk assessment tools, a lack of training, resources, and collaboration across systems. Challenges are recognized in working with vulnerable communities and individuals. More detailed analyses are provided by sectors including the role of child protection, anti-violence against women services, police, and corrections in working with Indigenous communities, immigrant and refugee families, rural and remote communities and children exposed to domestic violence. A panel of service providers will reflect on the meaning of these research findings with their service sector, jurisdiction and populations served.

1:00 – 1:25	Welcome, Orientation, Ceremony – Mary Lou and Dan Smoke, Peter Jaffe, Myrna Dawson
1:25 – 1:50	Research with service providers regarding domestic violence risk assessment, risk management and safety planning Peter Jaffe, Marcie Campbell
1:50 – 2:05	Reflections from Ontario service providers: Challenges and promising practices to assessing risk for children – Mike Saxton, Laura Olszowy, Katherine Reif
2:05 – 2:20	Cultural considerations of intimate partner violence offender treatment in Canada: An exploratory study - Mary Aspinall
2:20 – 2:35	Break
2:35 – 2:50	Service providers perspectives on the complexity of domestic violence and homicide risk assessments, and its implications for service provision within immigrant and refugee communities – Abir Al Jamal, Meineka Kulasinghe, Sarah Yercich, Katherine R. Rossiter
2:50 – 3:05	A Discussion of Premigration Trauma and Postmigration Stress as Possible Factors for IPV in Immigrant/Refugee Populations- Misha Maitreyi, Cathy Holtmann
3:05 – 3:20	Safety planning among domestic violence service providers: A call for an intersectional approach – Meghan Gosse, Diane Crocker, Dolly Mosher
3:20 – 4:00	Moderated panel discussion – Implications of what we have learned for service providers – Moderator: Peter Jaffe. Panel: Josie Nepinak, Verona Singer, Tracy Porteous, Mohammed Baobaid
4:00 – 4:15	Closing remarks and ceremony – Myrna Kicknosway, Myrna Dawson, Peter Jaffe
4:15 – 5:00	Breakout discussions – join a “Session” to ask questions of speakers and panelists  Wellness rooms remain available for those who need to de-brief

# DAY 03

Thursday, May 13

---

Listening to the voices of  
survivors and victims

**THURSDAY, MAY 13, 2021****Learning from Missed Opportunities to Prevent Homicides: Listening to the voices of survivors and victims**

Women and children across Canada who live with domestic violence may be at risk of severe violence and domestic homicide. Many women and children have been killed – others have survived. There are opportunities to learn from survivors about what worked. There are opportunities to learn from friends and family members who lost someone to domestic homicide as to what might have been done differently with hindsight. This session will offer insights from interviews conducted with survivors of domestic violence and loved ones of homicide victims. These women and children often had to negotiate safety and managed risk on a daily basis and their experiences when seeking help is critical to understand – especially based on their social identity, location and other factors.

1:00 – 1:25	Welcome, Orientation, Ceremony – Myrna Kicknosway, Myrna Dawson, Peter Jaffe
1:25 – 1:50	Conducting research with survivors of domestic violence and loved ones of homicide victims: Methodological challenges and realities – Julie Poon, Anna-Lee Straatman
1:50 – 2:05	Achako – nastakonikewin (Reconnecting our Spirits) – Renée Hoffart, Kendra Nixon, Angie Hutchinson, Hilda Anderson-Pyrz, Sharon Mason, Dana Riccio Arabe, Jacquie Leader
2:05 – 2:20	Break
2:20 – 2:35	What survivors and relatives tell us about domestic and family violence services to prevent domestic and familial homicide – Alicia Ibarra-Lemay, Sabry Adel Saadi, Catherine Richardson, Janie Dolan Cake, Mélanie Ederer, Myriam Dubé
2:35 – 2:50	Indigenous Mothers Experience of Intimate Partner Violence in Rural, Remote and Northern Places – Alana Glecia, Pertice Moffitt
2:50 – 3:05	Immigrant and refugee survivors' perspectives on help-seeking, gaps in services, and strategies for preventing severe domestic violence and homicide – Abir Al Jamal, Mohammed Baobaid, Misha Dhillon, Katherine R. Rossiter, Sarah Yercich, Margaret Jackson, Sepali Grunge
3:05 – 3:20	Ka Paspicik Kitimahitowin Wikiwak (Survivors of Domestic Violence)- Renée Hoffart, Kendra Nixon, Angie Hutchinson, Hilda Anderson-Pyrz, Sharon Mason, Dana Riccio-Arabe, Jacquie Leader
3:20 – 3:35	Staying Alive: Safety and Coping Strategies Used by Mothers and Children Living with Domestic Violence - Alexis Winfield, Julie Poon, Anna Lee Straatman, Zoe Hilton & Peter Jaffe
3:35 – 4:05	Moderated panel discussion – How can listening to the voices of survivors inform practice?- Moderators: Anna-Lee Straatman, Julie Poon. Panel: Nicole Eshkakogan, Deborah Sinclair, Deepa Mattoo, Janie Dolan-Cake
4:05 – 4:15	Closing remarks and ceremony – Mary Lou and Dan Smoke, Myrna Dawson, Peter Jaffe
4:15 – 5:00	Breakout discussions – join a “Session” to ask questions of speakers and panelists  Wellness rooms remain available for those who need to de-brief

# DAY 04

Friday, May 14

---

Translating knowledge  
into practice

**FRIDAY, MAY 14, 2021**

Translating knowledge into practice

**WORKSHOP 1: CANADIAN DOMESTIC VIOLENCE DEATH REVIEW COMMITTEES: EMERGING CHALLENGES AND BARRIERS TO IMPLEMENTING RECOMMENDATIONS**

As of 2021, seven Canadian provinces have developed domestic violence death review committees to provide an in-depth review of domestic homicides. These reviews are intended to identify risk factors prior to the homicide, previous community and justice interventions and potential missed opportunities to intervene. The reviews offer recommendations on how to prevent deaths in the future in similar circumstances. DVDRCs are at different stages of development in Canada with multiple models for exploring these homicides. The workshop will highlight challenges to developing and sustaining these committees and barriers to monitoring implementation of recommendations.

**WORKSHOP 2: IMPLICATIONS FOR PREVENTION: EVIDENCE- BASED PRACTICE, CHALLENGES AND NEXT STEPS**

From 2015 to 2021, the Canadian Domestic Homicide Prevention Initiative has focused on identifying risk assessment, risk management and safety planning strategies that are unique to Indigenous, immigrant and refugee, rural, remote, and northern communities, and children exposed to domestic violence. The *Preventing domestic homicide: From research and lived experiences to practice* conference highlights these findings, which can inform frontline practice. The workshop builds on the conference by inviting practitioners to participate in a discussion regarding challenges that arise from ongoing systemic or social issues that impede change, as well as to deliberate next steps for research and practice.

1:00 – 1:25	Welcome, Orientation, Ceremony-Mary Lou and Dan Smoke, Myrna Dawson, Peter Jaffe
1:20 – 2:20	Canadian domestic violence death review committees: emerging challenges and barriers to implementing recommendations – Moderated panel discussion – Peter Jaffe, Myrna Dawson, Deidre Bainbridge, Stéphanie Gamache, Emily Caissy, Lori Moen, Sara Collins
2:20 – 2:35	Break
2:35 – 3:05	Songs for Murdered Sisters Poetry by Margaret Atwood Music by Jake Heggie Copyright © 2020 by Jake Heggie and Margaret Atwood. All Rights Reserved. Sole Agent: Bill Holab Music
3:05 – 3:30	The road ahead in preventing domestic homicides – where do we go from here?- Moderated chat discussion
3:30 – 3:45	Spoken word by El Jones
3:45 – 4:00	Closing remarks and ceremony – Myrna Dawson, Peter Jaffe, Myrna Kicknosway

**We gratefully acknowledge the support and guidance of Elders throughout the project and for this conference:**



#### **ELDER MYRNA KICKNOSWAY**

My Shognoshi Nozwin is Myrna Kicknosway. I'm a Bodawatomi/Odawa Anishinaabe Kwe of the Loon Clan. I originate from these lands and waters that are part of Bkejwanong Territories. I reside at Walpole Island upstream from Detroit/Windsor on the St. Clair River. I'm a mother, grandmother and great grandmother. My life journey, my personal learning and healing are providing me with an ever-expanding appreciation/gratefulness for who I am, and the knowledge and wisdom of the ancestors who walked on this creation before me. Helping others is my life purpose opening endless possibilities/opportunities for resiliency, compassion, joy and forgiveness. I acknowledge all those men and women, many of whom have passed into that beautiful Spirit realm, who have helped me on my journey. This journey has lead me towards recognition of the inter connectedness of all humans, the significance of culture, language, traditions and all those elements that help sustain life here, this place I call my mother.



#### **ELDER DAN SMOKE**

Dan Smoke is a member of the Seneca Nation. He is active in many areas of community life as a traditional knowledge carrier, community activist, and cultural teacher. Dan carries diverse teachings from many Indigenous Nations, which he shares to educate those who are willing to learn and listen. Dan has also served as a Cultural Counsellor and Visiting Elder with a number of colleges, universities, and agencies throughout Ontario, and as an Adjunct Professor at Western. He has supported the development of cultural competency and ceremonial protocols to staff and faculty members, and has worked with public school boards over the past 14 years in many different capacities most notably working with youth. It is through Dan's generous spirit, that he inspires everyone to believe in an inclusive community where new knowledge and understanding leads to healing, harmony and peaceful co-existence.



#### **ELDER MARY LOU SMOKE**

Mary Lou Smoke is a member of the Ojibway Nation. She is a gifted writer, singer, guitarist and traditional drummer who generously shares her talents with her community. An exceptional individual, Mary Lou has worked tirelessly for many years in the City of London to bridge racial divides. She is committed to sharing Indigenous knowledge, histories, and culture to overcome barriers that lead to misunderstandings and cultural divides. Mary Lou is a positive role model within both Indigenous and non-Indigenous communities, and has served as a Cultural Counsellor and Visiting Elder for a number of colleges, universities, and organizational service providers. She has also served as an Elder for local public school boards and helped develop cultural competency and ceremonial protocols that foster awareness and understanding across students, staff and administration.

## **The conference would not have been possible without the support of the following:**

- French interpretation provided by Caroline Napier and her team at Dialogue Interpretations Services
- French translation provided by Agnes Revenu for all the documents for the conference and throughout the project.
- David Stevens – Eyepowered Media
- Katisha Rasheed – PLUG PR + EVENTS
- Graphic design team at CREVAWC

## **Conference Committee Members:**

- Abir Al Jamal, Muslim Resource Centre for Social Support & Integration
- Alicia Ibarra Lemay, Concordia University
- Aliina Vaisanen, Canadian Women's Foundation
- Angie Hutchinson, Survivor's Hope
- Anna-Lee Straatman, Centre for Research & Education on Violence against Women & Children, Western University
- Anuradha Dugal, Canadian Women's Foundation
- Crystal Giesbrecht, Provincial Association of Transition Houses and Services of Saskatchewan
- Diane Crocker, Saint Mary's University
- Janie Dolan-Cake
- Jordan Fairbairn, King's University College
- Julie Poon, Centre for Research & Education on Violence against Women & Children, Western University
- Katherine Rossiter, Ending Violence Association of British Columbia
- Myrna Dawson, Centre for the Study of Social and Legal Responses to Violence, University of Guelph
- Nicole Eshkakogan, Awo Taan Healing Lodge
- Peter Jaffe, Centre for Research & Education on Violence against Women & Children, Western University
- Pertice Moffitt, Aurora College
- Sarah Rehim, Community Safety and Crime Prevention, Ministry of Public Safety and Solicitor General, British Columbia
- Zoe Hilton, Waypoint Centre for Mental Health Care

Wellness Session Facilitators are available in the Session section of hopin. You can connect via the Sessions tab for de-briefing. These sessions offer an opportunity to debrief for those who experience strong emotions or reactions triggered by the homicide conference. As such, they offer support only, not counselling. If, in the days following the conference, you continue to be bothered by strong emotions or reactions, we encourage you to follow up with a professional therapist.

Thank you to our wellness facilitators for providing this support:



## DIAMOND ANTWI-MANSAH

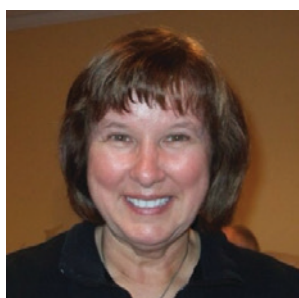
Diamond Antwi-Mansah (she/her) is a Project Coordinator for capacity building programs and peer support for the Women's Centre for Social Justice, better known as WomenatthecentrE, a unique non-profit organization created by and for women, gender queer, two-spirited and trans survivors of gender-based violence. She completed her Bachelor of Social Work (BSW) at Ryerson University, which sparked her interest in joining the GBV sector. Diamond is dedicated to supporting survivors of gender-based violence and has experience in working in the VAW shelter system as a support worker. Diamond has a passion for engaging community members and

organizations on social justice activism.



## JANIE DOLAN-CAKE

Janie Dolan-Cake is a researcher, advocate and activist. She was born and raised in Tiohtiá:Ke/Montreal, a recognized territory from the Kanien'kehá:ka Nation. She completed a Masters degree in Social Work and has been involved in the fight against violence against women and structural violence for over 10 years. She is committed to supporting women recovering from violence and to creating spaces and moments for sharing and meeting. She is interested in dignity, the quality of responses and the resistance of individuals to different forms of violence and oppression.



## BARB DORRINGTON

Barb Dorrington is a retired social worker based in London Ontario. Throughout her 40 year career in the social work profession, she worked within various settings including a children's mental health agency, a local school board, and ultimately for herself in private practice utilizing her art therapy skills. Debriefing was a central part of her school-based social work as well as her many volunteer experiences to assist with hurricane survivors in the southern USA. Barb was trained in her debriefing practices by the National Institute in Trauma and Loss for Children and became a Trauma and Loss Consultant Supervisor, eventually teaching in some of the programs and workshops.



## MÉLANIE EDERER

Mélanie Ederer is a social worker, an activist and a master's student in social work at l'Université du Québec à Montréal. She aims to combine research and grassroots actions to fight against social injustices. Her interests include gender-based violence, systemic oppressions and civic participation. To facilitate access to knowledge and break the walls that maintain uneven power dynamics, she organizes events and create opportunities to share feminist tools and exchange experiential knowledge.

Facebook: [facebook.com/Melaniederer](https://facebook.com/Melaniederer)

LinkedIn: [linkedin.com/in/melanie-ederer](https://linkedin.com/in/melanie-ederer)





### BARBARA FRITZ

A graduate of the UQAM's Bachelor of Social Work program, Barbara has been working in a shelter for women victims of domestic violence for nearly six years. Through her social engagement and her professional endeavours, she has acquired a lot of experience working with various marginalized groups. During the conference, this social work technician will have the opportunity to offer her listening skills and support to participants.



### GILLIAN HUBICK

Gillian Hubick is a registered Social Worker (MSW, RSW) with over 15 years' experience serving children, adults and families. She is in Private Practice in London, Ontario. Gillian specializes in attachment, relational trauma, parenting and the Early Years. She is trained in attachment interventions, EMDR, Emotionally Focused Individual Therapy (EFIT) and Narrative Therapy, and practices from a strengths-based, trauma-informed lens.



### TERRI LANE

Terri has been a practicing Social Worker since 1990. Terri's professional background includes working in the fields of children/adult mental health, and addictions. Her clinical experience includes extensive training in: Narrative Therapy, Solution Focused Therapy/Brief Therapy, Emotionally Focused Therapy (EFT) with the International Center of Excellence in EFT for couples in distress, and Eye Movement Desensitization Reprocessing (EMDR) therapy for clients dealing with distressing/anxiety provoking/traumatic events in one's life. Terri has also completed training in Cognitive Behavior Therapy, and Mindfulness. She works from an anti-oppressive and anti-racism

perspective and has experience working with many clients including clients in the LGBTQ2S community, and First Nations.



### KARIA JONES

Karia Jones (she, her) is a Register Social Worker currently doing transformative work as a project coordinator at Womenatthecentre. She received her Master of Social Work (MSW) at Ryerson University, where her research focused on 'the impacts of violence and trauma on the mental health of Black Canadians'. She works with women, men, children, youth, those experiencing homelessness, and various marginalized populations. Her work includes community development, counselling, policy analysis, and advocacy work in the areas of gender-based violence, education, mental health and addictions, and homelessness. She enjoys spending time with her bundle of joy, mr. bubble, and watching endless tv shows.



### GENEVIEVE LATOUR

Originally from Eastern Ontario, I moved to New-Brunswick in 2016 and have been working for Moncton's Transition House, Crossroads for Women, for the past 5 years. Before moving to New-Brunswick, I worked with victims and survivors of violence for various organizations in Ottawa and Eastern Ontario. I can provide support services in French and English. I enjoy reading, drinking tea, gardening and spending time in my community of Greater Rogersville. I am committed and passionate about social and environmental justice and the empowerment of women and people in situations of oppression.



## CATHY RICHARDSON KINEWESQUAO

Dr. Catherine Richardson Kinewesquao is a counsellor/therapist, professor, researcher, activist and an author. She is the Director of First Peoples Studies at Concordia University in Montreal and a co-founder of the Centre for Response-Based Practice. Cathy is Métis with Cree, Gwichin and English/Swedish ancestry. She teaches counsellors and social workers and promotes system change and decolonization in all areas of social services.

Cathy is a lead researcher for a number of current studies, such as the Quebec Youth Network Chair, the Canadian Domestic Homicide Prevent Initiative With Vulnerable Populations, Quebec region; and documenting promising practices for Indigenous transition house work (FRIDAA). Cathy is the winner of the Canadian Counselling and Psychotherapy Association Indigenous Practice Award in 2019 and she is a co-organizer of the *Dignity* conferences. Cathy has authored several books, including her most recent ones “Facing the Mountain: Indigenous Healing in the Shadow of Colonialism” and “Stanley on the Shoulder of Giants”.



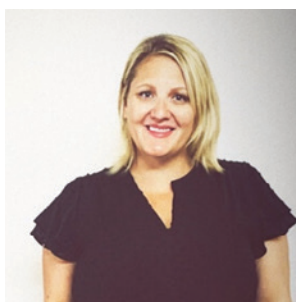
## **ABIR AL JAMAL MSW, RSW**

Abir Al Jamal, MSW, RSW, is an international social worker with experience working with people impacted by war and violence. In Canada, she is a practitioner and Research Coordinator at the Muslim Resource Centre for Social Support and Integration. She is part of various research projects and her research is focused on Domestic Violence, risk assessments, and social issues that impact collectivist newcomers' communities.



## **HILDA ANDERSON-PYRZ**

Hilda Anderson-Pyrz is from O-Pipon-Na-Piwin Cree Nation in northern Manitoba. Hilda is the Missing and Murdered Indigenous Women and Girls Liaison Unit Manager with Manitoba Keewatinowi Okimakanak (MKO) and she is based in Thompson, Manitoba.



## **DANA RICCIO-ARABE**

Dana Riccio-Arabe is a proud Indigenous woman of mixed ancestry, a mother of two, and carries with her over a decade of executive management experience in the not-for-profit sector. Dana has dedicated her professional and volunteer activities to strengthening and supporting Indigenous children, youth and families in Winnipeg's Inner City. Dana is currently the Executive Director of Wahbung Abinoonjiag, a domestic violence prevention, crisis and healing centre for children and their families.



## **MARY ASPINALL**

Mary Aspinall is a PhD Candidate in the Department of Sociology at the University of New Brunswick under the supervision of Dr. Carmen Gill. Her research interests include intimate partner violence and therapeutic jurisprudence, with her dissertation focusing on the implementation of intimate partner violence treatment programs and specialized domestic violence courts throughout Canada. Mary previously worked as a Domestic Violence Victim Caseworker, shelter worker, and panel member for the Saskatchewan Domestic Violence Death Review Committee (DVDRC). She currently serves on the New Brunswick DVDRC and is coordinating a national research study with her supervisor on policing and coercive control.



### DEIDRE BAINBRIDGE

Deidre Bainbridge is a Provincial Nurse Manager for the Office of the Chief Coroner and Forensic Pathology Service of Ontario. She is also the chair of the DVDRC and the provincial lead for the management of unclaimed decedents. Deidre has practiced as a nurse since 1989 and a nurse practitioner since 2001. She obtained her Master's in Nursing in 2014. Her clinical practice has focussed on women's health, specifically sexual assault, domestic violence and mental health. She is a nursing leader, educator and clinician researcher.



### MOHAMMED BAobaID

Dr. Baobaid earned his doctoral degree from the institute of Psychology at the University of Erlangen Nuremberg in Germany. He is the founder and the Executive Director of the Muslim Resource Centre for Social Support and Integration in Canada (MRCSSI) and adjunct professor at the Western University. For 30 years he has conducted research on families and children and youth at risk of violence and developing culturally appropriate responses in Yemen and Canada. Based on the outcome of his research, a culturally integrative model of family violence responses has been developed and implemented.

Twitter: [@mohd\\_baobaid](https://twitter.com/mohd_baobaid)

LinkedIn: [linkedin.com/in/mohammed-baobaid-955110164](https://www.linkedin.com/in/mohammed-baobaid-955110164)



### EMILY CAISSY

Emily obtained a college degree in Corrections, followed by a Bachelor of Applied Arts in Criminal Justice with a double major in Criminology and Psychology from Saint Thomas University in Fredericton NB. She has worked as a probation officer and a victim service coordinator. Emily has worked as a coroner for the past four years, a regional coroner for the past two years, and more recently, has held the position of Chair of the New Brunswick DVDRC for over a year.



### MARCIE CAMPBELL

Marcie Campbell received her B.A in Psychology and a Masters in Counselling Psychology program from Western University. Marcie worked as a Research Associate at the Centre for Research & Education on Violence against Women & Children (CREVAWC), conducting research on issues related to woman abuse and children exposed to domestic violence, with specific attention to the role of perpetrators and domestic homicide prevention. Since 2013, Marcie has served as a full committee member on the Ontario Domestic Violence Death Review Committee. Marcie currently works as a student counsellor and counselling supervisor at York University. Marcie was the National Research Coordinator for the CDHPVP until 2018.





## SARAH COLLINS

Sarah Collins is a Director of Community Safety and Well-Being with the Community Engagement Division of the Ministry of Justice and Attorney General and the Ministry of Corrections, Policing and Public Safety in Saskatchewan. One of Sarah's responsibilities includes supporting the Government's response to various forms of Interpersonal Violence and Abuse, including domestic homicides. Sarah's current work includes improving community safety and well-being in Saskatchewan by supporting a shift from an over reliance on emergency responses to early intervention and prevention initiatives through stakeholder collaboration, information sharing and measurement.



## DIANE CROCKER

Diane Crocker is a Professor in the Department of Criminology at Saint Mary's University. Her work explores the use of law to address social problems, particularly those that disproportionately affect women. Current project include work with Nova Scotia's *Standing Together* initiative to develop a provincial domestic violence action plan for the province, and an evaluation campus sexual violence policies in Nova Scotia.

Website: [www.dianecrocker.com](http://www.dianecrocker.com)

Twitter: [@SMUDianeCrocker](https://twitter.com/SMUDianeCrocker)



## MYRNA DAWSON

Myrna Dawson is a Professor of Sociology and Research Leadership Chair, College of Social and Applied Human Sciences, University of Guelph. She is the Founder and Director of the Centre for the Study of Social and Legal Responses to Violence ([www.violenceresearch.ca](http://www.violenceresearch.ca)) and the Canadian Femicide Observatory for Justice & Accountability ([www.femicideincanada.ca](http://www.femicideincanada.ca)). She is also Co-Director for the Canadian Domestic Homicide Prevention Initiative with Vulnerable Populations ([www.cdhipi.ca](http://www.cdhipi.ca)) and previously held a Canada Research Chair in Public Policy in Criminal Justice (2008-2018). She has spent over two decades researching social and legal responses

to violence with emphasis on violence against women, children and femicide. She is the author/co-author of numerous publications, including *Domestic Homicides and Death Reviews: An International Perspective* (Palgrave Macmillan, 2017), and has presented her research in Australia, Canada, Europe, United Kingdom, and the United States.



## MISHA DHILLON

Misha Dhillon (she/her), MA, is the Research & Projects Coordinator at the Ending Violence Association of BC (EVA BC). She earned a Master of Arts in Sociology from the University of British Columbia. In her role at EVA BC, she contributes her expertise to numerous projects and initiatives aimed at preventing and improving responses to gender-based violence, including community-based research and the development of training and resources for the anti-violence, health, justice, education, corporate, and settlement sectors.

LinkedIn: [linkedin.com/in/mishadhillon](https://www.linkedin.com/in/mishadhillon)

Website: [www.endingviolence.org](http://www.endingviolence.org)



### JANIE DOLAN-CAKE

Janie was born and raised in Tiohtiá:ke / Montréal on Kanien'kehá:ka territory. Over the last 10 years she has worn many hats and has taken on many different roles. She has been a facilitator, a creator, a researcher, a teacher, an intervention worker and an activist. She has completed a master's degree in Social Work from University of Montreal and has been involved for more than 10 years in the fight towards ending violence against women, structural violence and supporting women in their recovery from violence. It is very important to her that spaces be created that allow for sharing these women's stories, which she has gratefully been a part of through several of her

experiences. She is interested in preserving dignity, in the quality of responses and the resistance of individuals and groups of individuals towards different forms of violence and oppression. She has worked with both youth and adults and has spent years managing research and developing projects by, for and with youth.



### MYRIAM DUBÉ

Myriam Dubé is a Professor at the Université du Québec à Montréal to the School of Social Work. She received her PhD in psychology in 1999 from the Université of Montréal. Her interests include the following: prevention of conjugal and family homicide, the dynamics of conjugal violence, intersectoral collaboration, the continuum of exposure to conjugal violence including conjugal homicide, violence after conjugal separation including its judicial processing and the social problem of violence mediated by information technologies and communications against girls and young women. She has published extensively in francophone communities on

conjugal homicide and on child homicide.

Facebook: [facebook.com/myriam.dube.587](https://facebook.com/myriam.dube.587)



### ANURADHA DUGAL

Anuradha Dugal is Vice President of Community Initiatives at Canadian Women's Foundation and has worked there since 2008. She was previously Board Member (2002 – 2007) and Chair of the Violence Prevention Committee. Prior to joining the Foundation, Anuradha worked in youth violence prevention programs in Quebec and on the World March of Women, a transnational grassroots initiative launched by the Federation des femmes du Quebec. She is currently responsible for national strategies related to achieving gender equality. She leads the team that focuses

on grant making, knowledge mobilization, program enhancement, convening, and coalition building, and she continues to focus on addressing policy issues that will bring about systemic change for women and girls in Canada. Anuradha is very involved in social issues and she is President of the Conseil des Montrealaises, appointed by the municipal council of Montreal, and on Minister Monsef's Advisory Council for the Strategy on Gender-based Violence.

Twitter: [@AnuradhaDugal](https://twitter.com/AnuradhaDugal)

Facebook: [facebook.com/CanadianWomensFoundation](https://facebook.com/CanadianWomensFoundation)

LinkedIn: [linkedin.com/company/the-canadian-women's-foundation](https://linkedin.com/company/the-canadian-women's-foundation)

YouTube: [youtube.com/user/CanadianWomenFdn](https://youtube.com/user/CanadianWomenFdn)

Instagram: [instagram.com/canadianwomensfoundation](https://instagram.com/canadianwomensfoundation)



### CLAUDETTE DUMONT-SMITH

Claudette Dumont Smith is a member of the Kitigan Zibi community where she worked for several years as a Community Health Representative and community health nurse, respectively, before relocating to the national capital region. She has held various positions at the national level such as executive director of the Indian and Inuit Nurses of Canada and as executive director of the Native Women's Association of Canada (NWAC). In 2018, she was appointed as a Minister's Special Representative to address inequities in the Indian Act and most recently assumed the position of co-chair on the Federal sub-working group that is working with other sub-

groups to develop a National Action Plan in response to the Missing and Murdered Indigenous Women and Girls Inquiry's "Calls for Justice". She received her Bachelor of Science in Nursing degree in 1991, a Master's degree of Public Administration in 2000 from Queen's University and in 2017 received an Honourary Doctor of Laws, Honoris Causa from the University of Guelph.



### MÉLANIE EDERER

Mélanie Ederer is a social worker, an activist and a master's student in social work at l'Université du Québec à Montréal. She aims to combine research and grassroots actions to fight against social injustices. Her interests include gender-based violence, systemic oppressions and civic participation. To facilitate access to knowledge and break the walls that maintain uneven power dynamics, she organizes events and create opportunities to share feminist tools and exchange experiential knowledge.

Facebook: [facebook.com/Melaniederer](https://facebook.com/Melaniederer)

LinkedIn: [linkedin.com/in/melanie-ederer](https://linkedin.com/in/melanie-ederer)



### NICOLE ESHKAKOGAN

Nicole Eshkakogan (Morning Star) is Anishnawbe/Blackfoot from Sagamok Anishnawbek First Nation, Ontario and the Piikani Nation of the Blackfoot Confederacy in Southern Alberta. Nicole holds a Master's Degree in Sociology from the University of Alberta, where she is also completing her PhD. Nicole's work and research background is in Indigenous social epidemiology, anti-oppression praxis and racism, health equity, family violence, and gender and wellness. Nicole is the Scientific Director at the Awo Taan Healing Lodge Society.



### JORDAN FAIRBAIRN

Dr. Jordan Fairbairn is an Assistant Professor in the Department of Sociology at King's University College at Western University in London, Ontario, Canada. She is Co-Investigator with the **Canadian Domestic Homicide Prevention Initiative with Vulnerable Populations (CDHPVP)** and a member of the expert panel of the **Canadian Femicide Observatory for Justice and Accountability**. Dr. Fairbairn's research focuses broadly on gender, violence, and media, with a focus on social responses to violence against women. Recent publications have focused on **preventing domestic homicides among vulnerable populations, the role of social**

**media in VAW prevention**, and **developing stronger social responses to youth dating violence**. Previous and ongoing work explores **news portrayals of femicide**.



### STÉPHANIE GAMACHE

Stephanie Gamache has a bachelor's degree (B.Sc.) in physiology from McGill University and a bachelor of law degree (LLB) from the University of Sherbrooke. She was appointed as investigative coroner for the province of Quebec in 2014. Stephanie has investigated over 600 deaths in obscure and violent circumstances over the years and was responsible for the investigation into the death of a young woman victim of domestic violence in 2017 which received much media attention at the time because it brought to light missed opportunities to intervene which

might have prevented this tragic death. The death review committee in the context of domestic violence of the Quebec coroner's office was created shortly after this event and has brought together many organisations having an expertise in domestic violence with the goal to better understand its roots and therefore prevent future deaths in similar circumstances. Stephanie has been chairing this committee on an interim basis since March 2020 and was instrumental in the preparation of the first annual report of this newly formed committee in December 2020.



### CRYSTAL GIESBRECHT

Crystal Giesbrecht is the Director of Research and Communications at the Provincial Association of Transition Houses and Services of Saskatchewan (PATHS), the member association for domestic violence shelters and counselling centres. Her work at PATHS includes conducting research relating to intimate partner violence and educating professionals and the public on best practices for supporting survivors of intimate partner violence. Crystal is a Ph.D. student in the Department of Justice Studies at the University of Regina. Crystal is a partnership member of the Canadian Domestic Homicide Prevention Initiative with Vulnerable Populations and a member

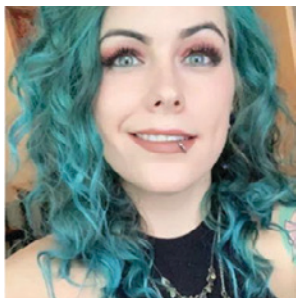
of the Canadian Femicide Observatory for Justice and Accountability's (CFOJA) Expert Advisory Panel.

Twitter: [@PATHS\\_SK @ \\_Crystal\\_Joy](https://twitter.com/PATHS_SK)

LinkedIn: [linkedin.com/in/crystal-giesbrecht-88704548](https://www.linkedin.com/in/crystal-giesbrecht-88704548)

Facebook: [facebook.com/pathssask](https://www.facebook.com/pathssask)

Instagram: [pathssk](https://www.instagram.com/pathssk)



### ALANA GLECIA

Tansi! My name is Alana, and I'm a nehiyaw from Flying Dust First Nation. My experiences growing up on my reserve, and then moving into an urban center, has guided me to focus on Indigenous issues throughout my professional and academic career. Positions I've held have allowed me a wealth of experience that ultimately drove me towards sociology and the study of Indigenous peoples in Canada. Academically, I tend to focus on Indigenous issues, with land sovereignty protests and violence against Indigenous women. I am currently pursuing a Masters degree in Sociology at University of Saskatchewan. My research interests include Indigenous Resistance & Resiliency; Decolonial Feminist Theory; Media Studies; Crime and Justice.

LinkedIn: [linkedin.com/in/alana-glecia](https://www.linkedin.com/in/alana-glecia)





### MEGHAN GOSSE

Meghan Gosse is a PhD Candidate in Sociology at Dalhousie University. Her SSHRC funded PhD research focuses on the intersections of gender and health, examining the experiences of those living with chronic pelvic pain. Meghan has worked on research projects focusing on gender-based violence, sexual violence, and “rape culture” on university campuses for the last seven years and has also worked for organizations such as the Stepping Stone Association and the Elizabeth Fry Society.

LinkedIn: [linkedin.com/in/meghan-gosse-1935401aa](https://www.linkedin.com/in/meghan-gosse-1935401aa)

Twitter: [@MegGosse](https://twitter.com/MegGosse)



### SEPALI GURUGE

Dr. Sepali Guruge is a Professor at the Daphne Cockwell School of Nursing. She obtained her education in Sri Lanka, the former Soviet Union, and Canada. She completed her doctoral degree in Nursing at the University of Toronto and her post-doctoral work at the University of Western Ontario. She is co-editor of the book, *Working with Immigrant Women: Issues and Strategies for Mental Health Professionals*. Dr. Guruge conducts research focused on immigrant women’s health examining violence against women throughout the migration process. She co-leads the Nursing Centre for Research and Education on Violence Against Women and

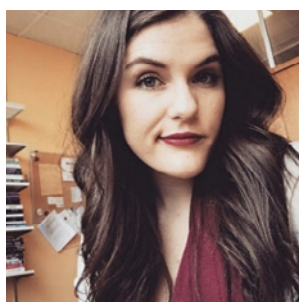
Children at Ryerson University.



### N. ZOE HILTON

N. Zoe Hilton, Ph.D., is senior research scientist at the Waypoint Centre for Mental Health Care, associate professor of psychiatry at the University of Toronto, and a registered psychologist. She is also Adjunct Scientist at the University of Ottawa Institute of Mental Health Research. She earned degrees from the University of Southampton, University of Cambridge and University of Toronto. She has published primarily on interpersonal violence, risk assessment and risk communication. She was the lead of the research team that developed the Ontario Domestic Assault Risk Assessment (ODARA) and oversees the ODARA 101 online training program.

Twitter: [@odalarisk](https://twitter.com/odalarisk)



### RENÉE HOFFART

Renée Hoffart is a Research Associate with RESOLVE Manitoba. She is a PhD Candidate in the Department of Sociology and Criminology at the University of Manitoba where her dissertation research focuses on risk-based approaches to intimate partner violence. Renée has previously worked at the Domestic Violence Unit at Family Service Regina, the YWCA Isabel Johnson Shelter, and the Regina Sexual Assault Centre.



### CATHERINE HOLTMANN

Dr. Catherine Holtmann is the Director of the Muriel McQueen Fergusson Centre for Family Violence Research (MMFC) and Associate Professor of Sociology at the University of New Brunswick in Fredericton. Her research program touches the areas of gender and religion, domestic violence, and immigrants. Locally Cathy is the principal investigator of the Muslim Family Safety Project in partnership with the Arab Cultural Centre, nationally she is part of the project Supporting the Health of Survivors of Family Violence in Family Law Proceedings and internationally she is a co-investigator on the project Violence against Women Migrants and Refugees:

Analyzing Causes and Effective Policy Response. Cathy represents the MMFC on the Provincial Roundtable on Crime and Public Safety and serves on the working group investigating Child Sexual Harm in the province.

LinkedIn: [linkedin.com/in/cathy-holtmann](https://www.linkedin.com/in/cathy-holtmann)



### JOSHUA HOPKINS

Canadian baritone Joshua Hopkins has established himself as a prominent leading artist throughout the United States and Canada. Joshua appears regularly at the Metropolitan Opera, the Lyric Opera of Chicago, Houston Grand Opera and Washington National Opera amongst many others. On the concert stage, he premieres Songs for Murdered Sisters – a collaboration between composer Jake Heggie and author Margaret Atwood, personally conceived by Mr. Hopkins in remembrance of his sister, Nathalie Warmerdam – on tour at Stanford Live, Vocal Arts DC, and Koerner Hall in Toronto.



### ANGIE HUTCHINSON

Angie Hutchinson is a First Nations woman from the Misipawistik Cree Nation. Committed to living mino pimatisiwin (the good life), Angie knows the importance of walking with humility while engaging in open dialogue. Angie's work has focused on gender equality, addressing exploitation and gendered violence, and improving the economic, legal, social and health status of Indigenous women and gender diverse individuals and their families. Angie also brings extensive experience working with all levels of government (First Nations, municipal, provincial, and federal). Working as a helper in many different roles, Angie approaches her work with a culturally

appropriate and trauma informed understanding, creating space for both Indigenous and Western knowledge. Working from the heart, Angie creates a space of inclusion and trust to foster natural connections. Knowing that we all walk this earth with a purpose, we each must seek out the knowledge and helpers to allow us to fulfill our purpose; Angie knows her purpose is to work for the people. Angie is the Executive Director of Survivor's Hope Crisis Centre.

Website: [www.survivors-hope.ca](http://www.survivors-hope.ca)

Email: [angie@survivors-hope.ca](mailto:angie@survivors-hope.ca)

Facebook: [@survivorshope](https://www.facebook.com/survivorshope)



### ALICIA IBARRA-LEMAY

Alicia Ibarra-Lemay is a Kanien'kehá:ka and Chilean student currently studying in the fields of First Peoples Studies and Child Studies at Concordia University, with an educational background in Intervention. Her current work in research centers around Empowering Indigenous Youth, Indigenous approaches to violence against Indigenous people, Indigenous approaches to Healing and lastly Domestic Homicide prevention in Canada.

LinkedIn: [linkedin.com/in/alicia-ibarra-lemay-49387218b](https://www.linkedin.com/in/alicia-ibarra-lemay-49387218b)



### MARGARET JACKSON

Margaret Jackson is Professor Emerita in the School of Criminology and Director of the FRED Centre at Simon Fraser University. She was principal investigator for a Federal Ministry of Justice study on child abuse. Other research areas of interest include criminal justice policy analysis, problem-solving courts, and most recently, bullying and cyberbullying. Margaret primarily focuses upon research issues related to domestic violence and its impacts on women and children.



### EL JONES

El Jones is a spoken word poet, an educator, journalist, and a community activist living in African Nova Scotia. She was the fifth Poet Laureate of Halifax. In 2016, El was a recipient of the Burnley "Rocky" Jones human rights award for her community work and work in prison justice. She is a co-founder of the Black Power Hour, a live radio show with incarcerated people on CKDU that creates space for people inside to share their creative work and discuss contemporary social and political issues, and along with this work, she supports women in Nova Institution in writing and sharing their voices.



### PETER JAFFE

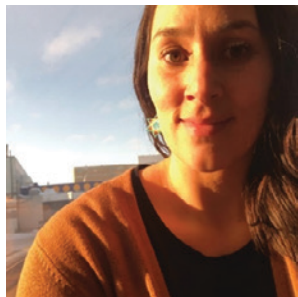
Dr. Peter Jaffe is a psychologist, Professor, and the Academic Director of the Centre for Research and Education on Violence Against Women & Children in the Faculty of Education at Western University. He has co-authored eleven books, 40 chapters and over 80 articles related to domestic violence, the impact of domestic violence on children, homicide prevention and the role of the criminal and family justice systems. For the past 30 years, he has presented workshops across the United States and Canada, as well as Australia, New Zealand, Costa Rica and Europe to various groups including judges, lawyers, health, mental health professionals and educators. Since

1999, he has been on faculty for the National Council of Juvenile & Family Court Judges in the US for judicial education programs entitled "Enhancing Judicial Skills in Domestic Violence Cases". He was a founding member of Ontario's Chief Coroner's Domestic Violence Death Review Committee. He has also been instrumental in developing violence prevention programs for schools. Together with David Wolfe, Claire Crooks and Ray Hughes, he helped in the development of "The Fourth R: Skills for Youth Relationships", a school-based curriculum targeting multiple forms of violence, including bullying, dating violence and peer violence. The curriculum is being used in over 5,000 schools in Canada and the US.



### MEINEKA KULASINGHE

Meineka Kulasinghe, MSW, RSW, is a social worker with experience working with immigrants and refugees. She currently supports the settlement of newcomers to Canada by providing cultural sensitivity training to those employed in the housing sector. Meineka supports various research projects focused on the settlement and integration of newcomers to Canada.



### JACQUIE LEADER

Jacquie Leader (She/Her) is honoured to have grown up in Treaty 5 Territory. She has a strong relationship with this Land and often returns North to be near the lakes and rivers, where she feels a strong connection to her ancestors. Jacquie's is currently a Coordinator for Spirit of Peace with the Ma Mawi Wi Chi Itata Centre Inc. Spirit of Peace is a place of community that was created to support and strengthen individual, family, and community healing from violence for current and future generations. The program is rooted in Indigenous knowledge and ways of knowing and works with all who are impacted by family violence including individuals, families, and

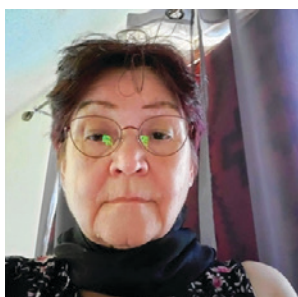
communities. We strive to establish an atmosphere of trust and openness within groups that facilitates a safe environment to address problematic behaviours and the impacts of violence. In this role, Jacquie brings with her personal experience of the impacts of family violence and uses this experience to connect in a meaningful way. It is extremely important to Jacquie to always work from the heart and show kindness to everyone she has the honour of crossing paths with.



### MISHA MAITREYI

Misha Maitreyi is a Ph.D. student at the Department of Sociology at UNBF. Her research interests include collective violence, sexual violence as part of religious/ethnic violence, and memory of collective violence. She has a Masters in Sociology (University of Delhi) and Political Science (Central European University).

LinkedIn: [linkedin.com/in/misha-m-22539b117](https://www.linkedin.com/in/misha-m-22539b117)



### SHARON MASON

Sharon Mason is an Ojibway from the Peguis First Nation in MB. She is a certified Focusing therapist and trainer focusing on trauma and how it has affected Indigenous communities. She has one daughter and one granddaughter. For the last 30 years, Sharon's passion has been in the area of family violence awareness and prevention and finding ways to alleviate the stress of that. Sharon is a board member of Circling Buffalo Inc. (serving the 63 MB First Nations in the area of Family Violence Prevention Programs and the First Nations Women's Shelters). Sharon's main role on the board is shelter liaison between the 5 shelters and Circling Buffalo Inc. Sharon's career in

the area of family violence began when she was executive director of the First Nation Healing Centre (women's shelter in Fisher River). Sharon has served on the RESOLVE Steering Committee for 20+ years at which time she has been able to partner with projects.

Website: [circlingbuffalo.ca](http://circlingbuffalo.ca)

Facebook: [facebook.com/Circling-Bufferalo-Inc](https://www.facebook.com/Circling-Bufferalo-Inc)





### DEEPA MATTOO

Deepa Mattoo, LLB, MBA, PGD, Barrister and Solicitor, is the executive director of the Barbra Schlifer Commemorative Clinic. Previously, she was the Clinic's director of legal services. Before joining the Schlifer Clinic, Deepa was the project co-ordinator, staff lawyer and executive director at the South Asian Legal Clinic of Ontario. Deepa is directly involved in critical projects related to the criminalization of women, sexual violence and the precarious status of women, the risk assessment of gender-based violence, and inter-disciplinary case management. Deepa has appeared before parliamentary committees and UN civil society meetings on a wide range of social justice and human rights issues. She has also represented hundreds of clients at multiple tribunals and courts in numerous jurisdictions including the Supreme Court of Canada. Deepa is an Adjunct Professor and Visiting Faculty at the University of Toronto's Faculty of Law and an Adjunct Professor at Osgoode Hall Law School where she is the co-director of the Feminist Advocacy Program, hosted at the Schlifer Clinic. Deepa was the Law Foundation of Ontario's 2017 Community Leadership in Justice Fellow at Factor-Inwentash Faculty of Social Work at the University of Toronto. She has trained thousands of service providers for best practices and legal education to work with forced marriage survivors, racialized non-status women, and immigration law clients in the context of gender-based violence.

E-mail: [dmattoo@schliferclinic.com](mailto:dmattoo@schliferclinic.com)

Facebook: [@BarbraSchliferCommemorativeClinic](https://www.facebook.com/BarbraSchliferCommemorativeClinic)

Twitter: [@Schliferclinic](https://twitter.com/Schliferclinic)

Instagram: [@Schliferclinic](https://www.instagram.com/Schliferclinic)



### LORI MOEN

Lori has been with the BC Coroners Service since 2008, initially as scene investigator in and around Victoria, and more recently, working in the Specialized Investigations & Death Review Unit exclusively on homicide, police-involved, and domestic violence files. Lori has a Bachelor of Arts and Bachelor of Laws, both from the University of British Columbia and practiced criminal law before stepping into a home-based business while she raised her family.



### PERTICE MOFFITT

Dr. Pertice Moffitt, a researcher, educator and consultant, is currently a Research Associate, Aurora Research Institute. From 2011 to 2021, she held the position of Manager/Instructor, Health Research Programs at Aurora Research Institute/Aurora College in Yellowknife, Northwest Territories. Pertice taught within the nursing program from its inception (1994) to retiring in January, 2021. She continues to teach in the Masters of Nursing program at Athabasca University as a sessional teacher. Internationally, Pertice is an Honorary Professor with University of the Arctic (UiT) in Hammerfest, Norway where she collaborates in rural and remote education and research. Her research interest is Women's Health, Indigenous Health, Intimate Partner Violence, and Rural and Remote Nursing and has published extensively, influencing policy direction in the NWT. Currently, she is a co-investigator with the following projects: the Canadian Domestic Homicide Prevention Initiative for Vulnerable Populations (SSHRC funded); the "Sacred Spirit- Maternal Services Grant (CIHR funded); and COVID-End (developing rapid response syntheses during the pandemic). She is a PI on Strategies for Patient Oriented Research (SPOR): Evidence Alliance (CIHR funded).

LinkedIn: [linkedin.com/in/pertice-moffitt-83670832](https://www.linkedin.com/in/pertice-moffitt-83670832)

Instagram: [@perticem](https://www.instagram.com/perticem)



### DOLLY MOSHER

Dolly Mosher has worked in the field of Intimate Partner Violence for more than 20 years. She worked as a Domestic Violence Case Coordinator and subject matter expert in the field of High Risk Domestic Violence for the RCMP H Division and Halifax Regional Police until 2017 when she became the Coordinator of Halifax Regional Police's Victim Service Unit. Dolly is a founding member of Silent Witness Nova Scotia, is part of the Nova Scotia Chief's of Police Domestic Violence Committee, sits on various committee's through the Public Prosecution Service and Department of Justice and is a member of the Canadian Femicide Observatory for Justice and Accountability.



### JOSIE NEPINAK

Josie Nepinak, Anishinabe, Treaty 4. Executive Director, Awo Taan Healing Lodge Society, Calgary, Alberta. Josie's background includes 30 years steeped in complex social issues working with Indigenous organizations and advocacy for Indigenous women and families affected by family violence. She believes in a balanced approach, with teachings of Indigenous wisdom and healing in combination with contemporary western methodologies in promoting the health and well-being of First Nations, Inuit and Métis individuals, families and communities. She testified at the Missing and Murdered Indigenous inquiry in May 2018 on the matter of service

organizations as the only urban Indigenous Women's shelter in Alberta. She is also a Board member Institute for the Advancement of Aboriginal Women, chair of the Missing and Murdered Indigenous Women Committee (Calgary), Resolve Alberta, Research Education for Solutions to Violence and Abuse and the Canadian Domestic Homicide Prevention Initiative and a Canadian Femicide Observatory Justice and Accountability.



### KENDRA NIXON

Kendra Nixon is an associate professor in the Faculty of Social Work at the University of Manitoba. Dr. Nixon's overarching research agenda focuses on gender-based violence, and has included research on intimate partner violence, children's exposure to violence, mothering within the context of violence, domestic homicide, suicide and violence, and sexual exploitation. Dr. Nixon's research has primarily focused on policies aimed at reducing violence, as well as institutional responses to intimate partner violence, including the child welfare and criminal justice systems. Dr. Nixon is also the Director of RESOLVE, a tri-prairie research network on family and gender-

based violence. Dr. Nixon's teaching interests include social welfare policy, policy analysis, and qualitative research.

Facebook: [@RESOLVEUManitoba](#)

Twitter: [@ResolveUm](#)

Instagram: [resolveum](#)

YouTube: [RESOLVE UM](#)



### LAURA OLSZOWY

Laura Olszowy has been involved in research on domestic violence for several years with a main focus on understanding systemic responses to families. She completed her PhD at Western University in 2020 under the supervision of Dr. Peter Jaffe. Her doctoral research focused on the barriers and challenges child protection workers face in responding to domestic violence.



### JULIE POON

Dr. Julie Poon is the Research Manager at the Centre for Research and Education on Violence Against Women and Children. She assists on various research projects, including most recently, the *Supporting the Health of Survivors of Family Violence in Family Law Proceedings* project funded by the Public Health Agency of Canada; and the *Canadian Domestic Homicide Prevention Initiative* funded by the Social Sciences and Humanities Research Council. Previously, she served as the Research Coordinator on a Women and Gender Equality funded project conducting an environmental scan of equality-seeking organizations in Ontario. Julie has a PhD in Sociology from the

University of Guelph with research interests relating to violence against women and intimate partner violence.

Twitter: [@JulieMPoon](https://twitter.com/JulieMPoon)

LinkedIn: [linkedin.com/in/julie-poon-531372208](https://www.linkedin.com/in/julie-poon-531372208)



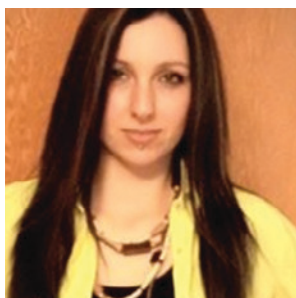
### TRACY PORTEOUS

Tracy is a leader in the Canadian anti-violence sector having worked for the last 39 years addressing gender-based violence, creating services for survivors and their families, developing policy and best practices for service providers, contributing to legislative advancement, and cross-sectoral training and collaboration. In 2020, Tracy was inducted into the Order of British Columbia and was also bestowed an Honorary Doctorate from the University of British Columbia. Tracy is a three-time Governor General of Canada medal recipient, was a member of BC's Domestic Violence Death Review Panels, has testified to federal Parliamentary committees, spoken

as a Canadian delegate at the United Nations, is a member of the National Domestic Homicide Prevention Committee as well as the Canadian Femicide Observatory for Justice and Accountability. Tracy co-launched the ground-breaking, award winning *Be More Than a Bystander: Break the Silence on Gender-Based Violence* campaign with the BC Lions Football Club. Tracy is currently the Executive Director of the Ending Violence Association of BC, a provincial association supporting over 300 anti-violence programs and initiatives across BC that respond to sexual and domestic violence, child abuse, and criminal and sexual harassment. Tracy is also Co-Chair of the Ending Violence Association of Canada.

[@EndViolenceBC](https://twitter.com/EndViolenceBC)

Facebook: [facebook.com/EndingViolence.org](https://facebook.com/EndingViolence.org)



### KATHERINE REIF

Katherine completed her BSc. in Psychology from the University of Toronto and her Master's in Counselling Psychology Ph.D. in School & Applied Child Psychology from Western University. Her research interests are primarily within the realm of forensic psychology and she is interested in examining the occurrence of child homicides in the context of domestic violence.



## CATHY RICHARDSON KINEWESQUAO

Dr. Catherine Richardson Kinewesquao is a counsellor/therapist, professor, researcher, activist and an author. She is the Director of First Peoples Studies at Concordia University in Montreal and a co-founder of the Centre for Response-Based Practice. Cathy is Métis with Cree, Gwichin and English/Swedish ancestry. She teaches counsellors and social workers and promotes system change and decolonization in all areas of social services. Cathy is a lead researcher for a number of current studies, such as the Quebec Youth Network Chair, the Canadian Domestic Homicide Prevent Initiative With Vulnerable Populations, Quebec region; and documenting promising practices for Indigenous transition house work (FRIDAA). Cathy is the winner of the Canadian Counselling and Psychotherapy Association Indigenous Practice Award in 2019 and she is a co-organizer of the *Dignity* conferences. Cathy has authored several books, including her most recent ones “Facing the Mountain: Indigenous Healing in the Shadow of Colonialism” and “Stanley on the Shoulder of Giants”.



## KATE ROSSITER

Kate Rossiter, PhD, is Research & Projects Manager at the Ending Violence Association of BC (EVA BC) and Adjunct Professor in the School of Criminology at Simon Fraser University, where she is Associate Director of the FREDACentre for Research on Violence Against Women and Children. Kate is a Co-Lead with the CDHPVP Immigrant and Refugee Populations Research Team.

[@FREDACentre](https://www.facebook.com/TheFREDACentre)  
[facebook.com/TheFREDACentre](https://www.facebook.com/TheFREDACentre)

[@EndViolenceBC](https://www.facebook.com/EndViolenceBC)  
[facebook.com/EndViolenceBC](https://www.facebook.com/EndViolenceBC)



## SABRY ADEL SAADI

Initially a special educator, over time I have retained my attachment to this professional identity in my research. For several years, I have worked in research, intervention and knowledge transfer. I have been a teaching and research assistant since 2017 in various research projects (University of Montreal- UQAM- ULAVAL). My research interests focus on violence against women and children on the one hand, and on the reality of immigrant and minorities individuals and families in a context of conjugal and family violence. As part of my doctoral thesis, I am interested in analyzing the different protective factors on the one hand and intersectoral collaboration on the other hand resulting from the experience of relatives (proxies) and survivors of family homicide in Québec.

Facebook: [facebook.com/prototype1](https://www.facebook.com/prototype1)  
 LinkedIn: [linkedin.com/in/sabry-adel-saadi-86193097](https://www.linkedin.com/in/sabry-adel-saadi-86193097)



## MICHAEL SAXTON

Dr. Michael Saxton recently completed his PhD at Western University under the supervision of Dr. Peter Jaffe. His research focus has been on the impact of domestic violence on victims and their families. His doctoral research has focused on the police response to domestic violence. Michael has presented nationally and internationally on topics related to domestic homicide, domestic violence prevention, and the system response to domestic violence. Clinically, he has gained experience in a variety of settings including youth justice, schools, and community mental health centers. He is currently working as a clinical psychologist under supervised practice with Kinark Child and Family Services.





### DEBORAH SINCLAIR

Deborah Sinclair is an intersectional feminist social worker in independent practice in Toronto, Ontario, Canada specializing in work with trauma survivors and their families as well as professionals and advocates who suffer the effects of complex PTSD/VT/Burnout. Throughout her career in human rights, public health prevention, and social justice work, Deborah has worked in many different capacities—as clinician, writer, speaker, trainer, researcher, policy advisor and expert witness. Deborah is a founding member of the Emily Stowe Shelter for Women, Women We Honour Task Force on Intimate Femicide and Luke's Place and was appointed to the Ontario Domestic Violence Death Review Committee (DVDRC) in 2003. From 2013 to 2014, Deborah served as a resource person for the National Task Force on Sex Trafficking of Women and Girls in Canada. She is the YWCA 2010 Woman of Distinction for Social Justice. On February 14, 2019 she successfully defended her doctoral dissertation titled—A Living History (1973-1993): How the Experiences of Early Activists Shaped the Violence Against Women (VAW) Movement in Ontario: A Case Study—at the Factor-Inwentash Faculty of Social Work, University of Toronto.

E-mail: [deborah@dasinclair.com](mailto:deborah@dasinclair.com)



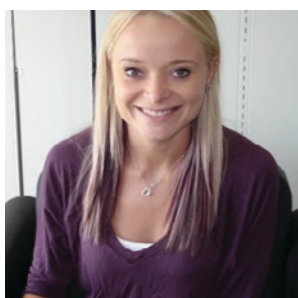
### VERONA SINGER

Dr. Verona Singer has a PhD from Dalhousie University and a Masters' in Criminology from the University of Ottawa. Verona has worked as a practitioner and researcher in the field of intimate partner violence, sexual violence, victims, and criminal justice for 35 years. Verona is an Adjunct Professor in the Department of Criminology at Saint Mary's University in Halifax. She is the Director of femlantic research & education, a consulting practice, and the former manager of Victim Services with the Halifax Regional Police. Verona sits on numerous committees and boards such as the Metro Interagency Restorative Conversations Committee on Family Violence, Canadian Domestic Homicide Prevention Initiative, the Canadian Femicide Observatory, CoSA Canada and the Academic Advisory Circle to the Federal Ombudsman of Victims of Crime. Verona's research includes restorative practices in gendered violence, high-risk case coordination on intimate partner violence, and gendered violence in the Halifax Regional Municipality.



### ANNA-LEE STRAATMAN

Anna-Lee is a Project Coordinator at CREVAWC. She coordinates the activities of the Canadian Domestic Homicide Prevention Initiative with Vulnerable Populations and other projects. She has conducted interviews with hundreds of survivors of intimate partner violence and abuse experienced in residential schools by teachers, and clergy. She holds a Masters degree in Library and Information Science. She has developed and conducted training for Victim Service agencies in southwestern Ontario. She is co-editor of a book with Katreena Scott and Peter Jaffe – Preventing domestic homicides: Lessons learned from tragedies. In her spare time, she enjoys working on the farm and doting on her grandchildren.



### DANIELLE SUTTON

Danielle Sutton is the Research Coordinator for the Centre for the Study of Social and Legal Responses to Violence and a PhD candidate in Sociology at the University of Guelph. Her research concentrates primarily on homicide, policing, and intimate partner violence.



### WENDY VERHOEK-OFTEDAHL

Wendy Verhoek-Oftedahl, Ph.D. is the Investigation/Research Representative for the Prince Edward Island (PEI) Office of the Child and Youth Advocate. She previously held the position of Family Violence Prevention Coordinator for the province as well as research and adjunct faculty positions at Brown University. She is an injury epidemiologist with expertise in public health surveillance of intimate partner violence, child maltreatment, and elder abuse. She was a contributor to the US Centers for Disease Control and Prevention (CDC) Uniform Definitions for Public Health Surveillance of Intimate Partner Violence, Child Maltreatment and

Elder Abuse. She served as state project manager for the US National Violent Death Reporting System and as coordinator of the Rhode Island Child Death Review Team.



### ALEXIS WINFIELD

Alexis Winfield is a soon-to-be graduate from the Masters of Arts in Counselling Psychology Program at Western University. From a young age, Alexis has been passionate about making a difference in the lives of women and children that have experienced violence and became actively involved in local VAW organizations. Alexis ultimately hopes to continue to pursue her education, specializing in Child and Adolescent Mental Well-Being.

LinkedIn: [linkedin.com/in/alexiswinfield](https://www.linkedin.com/in/alexiswinfield)



### SARAH YERCICH

Sarah Yercich is an Associate Director of the FREDACentre for Research on Violence Against Women and Children and a Ph.D. Candidate in the School of Criminology at Simon Fraser University. In addition to her work at the FREDACentre, Sarah is faculty at Capilano University and teaches within the departments of Sociology and Criminology, Women's & Gender Studies, and Interdisciplinary Studies.

Website: [www.fredacentre.com](http://www.fredacentre.com)

Twitter: [@FREDA\\_Centre](https://twitter.com/FREDA_Centre)

Facebook: [facebook.com/TheFREDACentre](https://facebook.com/TheFREDACentre)

## PROJECT DIRECTORS AND CO-INVESTIGATORS

**Myrna Dawson**, University of Guelph

**Peter Jaffe**, Western University

**Diane Crocker**, Saint Mary's University

**Myriam Dubé**, Université du Québec à Montréal

**Jordan Fairbairn**, King's, Western University

**Sepali Guruge**, Ryerson University

**Catherine Holtmann**, University of New Brunswick and Muriel McQueen Fergusson Centre for Family Violence Research

**Julie Kaye**, University of Saskatchewan

**Nicole Letourneau**, RESOLVE Alberta

**Pertice Moffitt**, North Slave Research Centre/ Aurora Research Institute

**Kendra Nixon**, University of Manitoba

**Cathy Richardson/Kinewesquao**, Concordia University

**Kate Rossiter**, Simon Fraser University and Ending Violence Association of British Columbia

**Katreena L. Scott**, Western University

## RESEARCH TEAM

### Project Manager

Anna-Lee Straatman

### Research Coordinators

Marcie Campbell (2015- 2018)

Julie Poon (2018-2021)

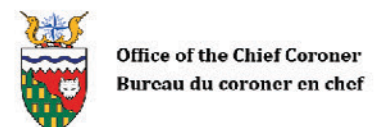
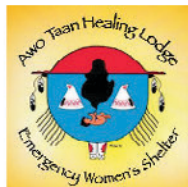
### Postdoctoral researcher

Jordan Fairbairn (2015-2017)

## RESEARCH COORDINATORS AND ASSISTANTS

	Meghan Gosse	Camille Pare-Roy
Abir Al Jamal	Valerie Grand'Maison	Olivia Peters
Sidrah Ahmad-Chan	Chelsea Heron	Keira Poelzer
Mary Aspinall	Renée Hoffart	Corinne Qureshi
Danielle Bader	Alicia Ibarra Lemay	Katherine Reif
Guila Benchimol	Nicole Jeffrey	Dylan Reynolds
Jennifer Bon Bernard	Anna Johnson	Sabry Saadi
Ciara Boyd	Sakthi Kalaichandran	Gursharan Sandhu
Ivy Chen	Sarah Kohtala	Mike Saxton
Marie Cornellier	Mariah Krancevich	Victoria Sedgwick
Randal David	Jordana Linder	Danielle Sutton
Misha Dhillon	Salima Massoui	Alexis Winfield
Janie Dolan-Cake	Natalia Musielak	Melissa Wuerch
Gena Dufour	Casey Oliver	Sarah Yercich
Mélanie Ederer	Laura Olszowy	Büşra Yalçınöz
Carolyn Fraser	Nick Ostapchuk	Nicole Youngson
Alana Glecia	Mariana Paludi	Angelika Zecha

## THANK YOU TO OUR PARTNERS



## THANK YOU TO OUR COLLABORATORS

Amy Fitz Gerald	Deidre Bainbridge	Margaret Jackson
Anita Olsen Harper	Desirae Barker	Mary Hampton
Anduradha Dugal	Genevieve Lessard	Meg Smith
Angus Monaghan	Ian Wheeliker	Mike Aube
Aruna Papp	Janelle Braun	Mohammed Baobaid
Barb MacQuarrie	Jane Urssel	Nicole Eshkakogan
Bill Lucas	Janelle Braun	Pertice Moffitt
Carole Brazeau	Jennifer Lord	Randy Kropp
Carolyn Goard	Joanne Baker	Rona Smith
Catherine Talbott	Jo-Anne Dusel	Scott Macdonald
Cathy Menard	Josie Nepinak	Sharon Mason
Cheryl Fraelich	Julie Czeck	Simon Lapierre
Clark Russell	Krystle Maki	Tamara Bernard
Claudette Dumont-Smith	Lana Wells	Tammy Bobyk
Cora McGuire-Cyrette	Linda Baker	Tracy Porteous
Crystal Gartside	Lindsey Decontie	Verona Singer
Crystal Giesbrecht	Lise Martin	Victoria Sedgwick
David O'Brien	Lorraine Whalley	Wendy Verhoek-Oftedahl
Deborah Doherty	Lydia Quinn	Zoe Hilton
Deborah Sinclair	Lynne Groulx	
	Maggie MacKillop	



Canadian Domestic Homicide  
Prevention Initiative



## CONTACT US

E-mail:

[cdhpivp@uwo.ca](mailto:cdhpivp@uwo.ca)  
[cdhpi@uoguelph.ca](mailto:cdhpi@uoguelph.ca)

Website:

[www.cdhpi.ca](http://www.cdhpi.ca)

